



The construction principle of the high powered K 20 mid-high cabinet allows for flexibility of use in horizontal or vertical orientations. Optimised placement of the 2 x 10" / 1.4" drivers in relation to one another ensures a very precise phase and coverage characteristic. For installation applications, the universal MultiRigg™ be used to mount the system. The K 20 is available in a self-powered version, and in a version with a passive crossover. 2 different horn forms are available to better cover various Sound Reinforcement situations.

PRODUCT SPECIFICATIONS

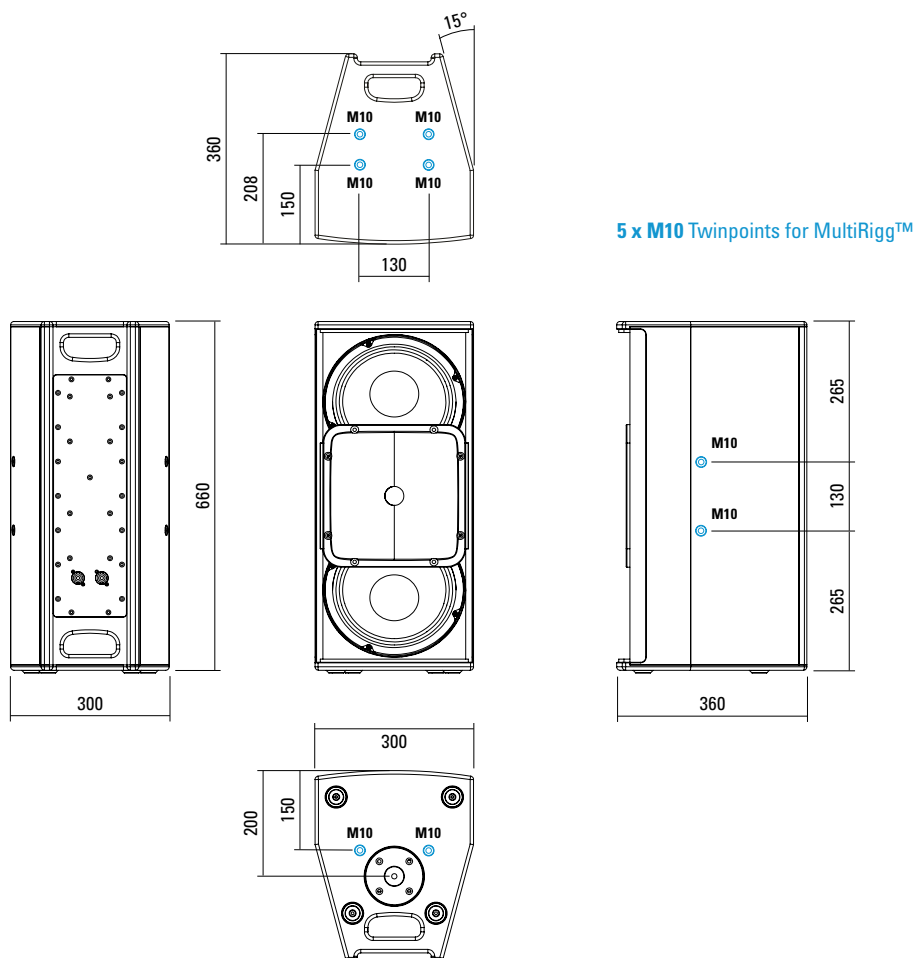
	K 20	K 20 dp
Speaker Components	2 x 10" Nd / 1.4" Nd	2 x 10" Nd / 1.4" Nd
Description	High Power HiMid System	Digitally Powered HiMid System
Power AES / Peak	800 W / 2400 W	---
Amp Power AES	---	LF: 1000 W / HF: 350 W / 110-230 V
Impedance nominal	4 Ω	---
Rated Current	---	1,8 A @ 230 V
SPL 1 W / Peak @ 1 m	100 dB / 134 dB	--- / 134 dB
Max. Input Signal	---	25 dBu
DSP	---	HDLM FPGA Processing 32 bit floating point
AD / DA	---	24 bit / 96 kHz
Latency	---	0,8 ms (analog in to analog out)
Usable Range	70 Hz - 18 kHz (-6 dB)	70 Hz - 18 kHz (-6 dB)
Tuning Frequency excursion minimum	80 Hz	80 Hz
X-Overpoint acoustical	900 Hz	Depends on preset
Coverage horizontal / vertical	90° x 60° (60° x 50°), rotatable	90° x 60° (60° x 50°), rotatable
Connectors	2 x Neutrik Speakon NL4MP in/out Coding: 1 +/- HiMid, 2 +/- loop thru	Neutrik XLR in/out Neutrik PowerCon in/out
Handles	2 x	2 x
Rigging / Fittings	10 x M10 for MultiRigg™ 35 mm Pole Mount	10 x M10 for MultiRigg™ 35 mm Pole Mount
Weight	22,5 kg	22 kg
Size height x width x depth	66,0 x 30,0 x 36,0 cm	66,0 x 30,0 x 36,0 cm
Order No.	01024/90° (90° x 60° Version) 01024/60° (60° x 50° Version)	01024/dp/90° (90° x 60° Version) 01024/dp/60° (60° x 50° Version)



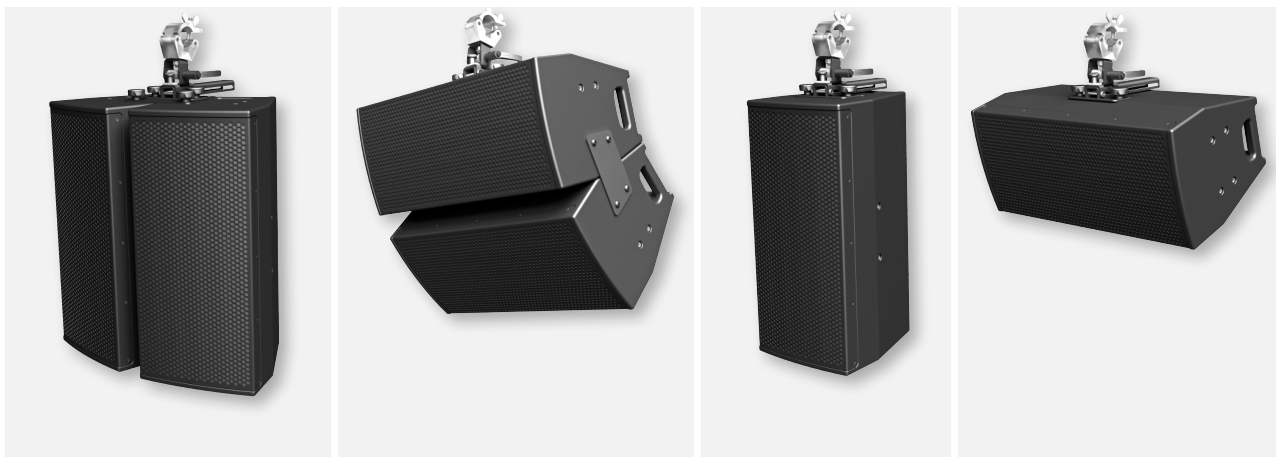
Simple installation with the universal MultiRigg™.



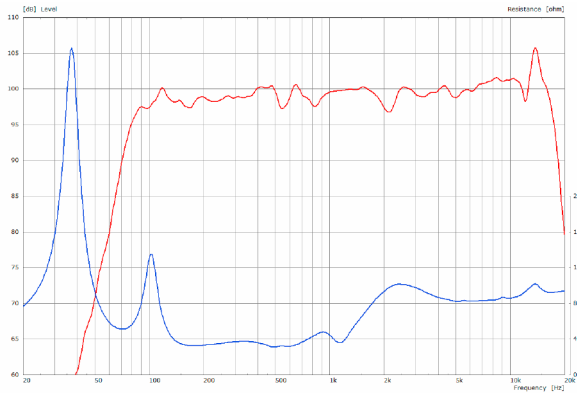
DIMENSIONS



APPLICATIONS



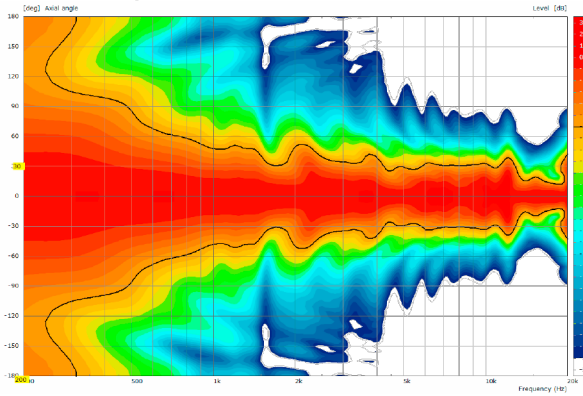
K 20 - Sensitivity 1 W @ 1 m + Impedance with Preset



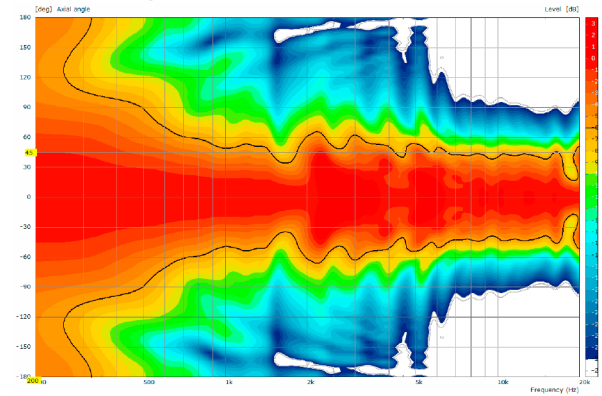
Controller Setups:

<https://www.seeburg.com/en/downloads>

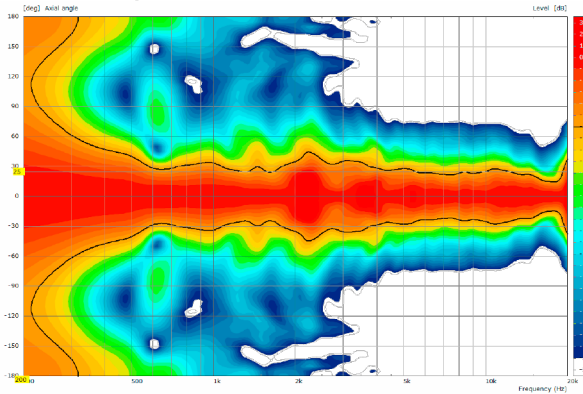
2D Directivity Plot - horizontal - 60° x 50°



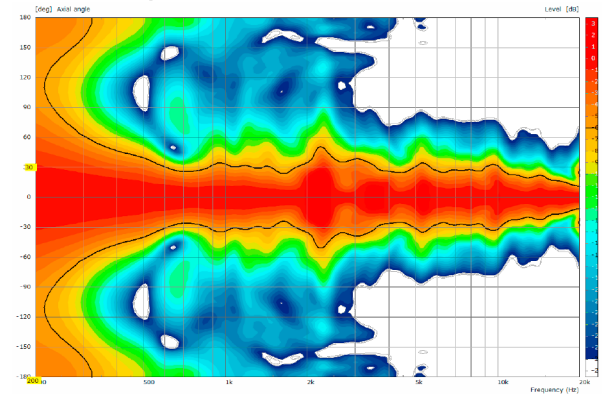
2D Directivity Plot - horizontal - 90° x 60°



2D Directivity Plot - vertikal - 60° x 50°



2D Directivity Plot - vertikal - 90° x 60°



The K 20 dp features integrated digital amplifier electronics with a DSP controller. Various factory-configured presets and volume settings can be selected.

High-grade electronic components from the industrial sector and a first-class circuit design ensure excellent audio quality with low distortion and a minimal noise floor. Highly efficient and "intelligent" limiter systems ensure optimum protection against overload, without restricting the possibilities offered by this high-performance sound system.

K20 dp

digitally powered Sound System

Serial No.:

Amp Power AES	1000W LF / 350W HF
max.SPL @ 1m	134 dB
Usable Range	70 Hz - 18 kHz
Tuning Frequency	80 Hz
Coverage hor./ver.	90° x 60° rotatable
Weight	22 kg



Made in Germany
www.seeburg.net



Caution

Only use the dedicated hardware to fly the K20 units

Presets

Flat

This setting provides a linear frequency response with a neutral sound characteristics. Standard setting for many applications.

High Boost

For use on long distances.

Boost

Similar to the „Flat“ preset, but with increased low end response.

Soft

Reduces the level in the frequency range from 2.5 - 5 kHz, to which the ear is particularly sensitive. This setting is recommended for high level reproduction of highly compressed music tracks.

Mode - key

Switches between control modes Status, Level and Presets.

Set - key

Setting of various values and Mute on / off.

Level

Adjustment in 3 dB steps (-6 dB to +3 dB).

Status

Mute LED

Red light when the system is muted or under technically critical conditions.

Limit LED

Yellow light when the limiter is restricting the level.

Signal LED

Green light when the input signal exceeds -20 dBu.

Power LED

Green light when the system is switched on.

XLR

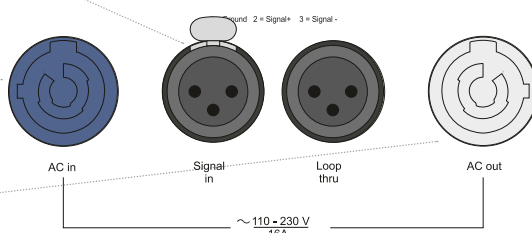
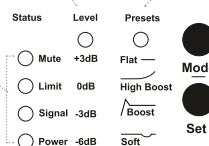
Symmetrical analog input max. Input +25 dBu. Effective filter protection against HF interference and DC Voltages. Electronically balanced to prevent noise.

PowerCon (blue)

Power supply
~ 110-230 V / 16 A max.

PowerCon (grey)

~ 110-230 V / 16 A max.
loop through connector



MultiRigg™



swiveling fastening solution for horizontal and vertical alignment, for flown / ground stacked / mounted applications, incl. accessories (2 x knurled screw M10 x 20 mm, 1 x handle screw M8 x 55 mm), max. load 50 kg

Order No. **01360**

MultiRigg™ light



version for fixed installations, for horizontal and vertical alignment, incl. accessories (2 x M10 x 20 socket head screws), max. load 50 kg

Order No. **01362**

Connector



K 20 -> K 20, max. load 75 kg
incl. (black version: 6 x M10 x 18 mm star knob screws
white version: 6 x M10 x 20 mm socket head screws)

Order No. **08157/set/w** (RAL 9010)

Order No. **08157/set**

Star Knob Screw



M10 x 18 mm

Order No. **08377**

Knurled Screw



M10 x 20 mm

Order No. **73750/w** (RAL 9010)

Order No. **73750**

Knurled Head Nut



reduction screw for fastening M10 Pole Mount Adapter (08126)

Order No. **73755**

Pole Mount Adapter



35 mm \varnothing -> M10 x 16 mm, M8 x 20 star knob screw

Order No. **08126**

Steel Safety



8 mm x 600 mm, black, max. load 40 kg (BGI 810-3), quick connector undetachably

Order No. **01376/8**

Ring Screw



M10- DIN 580

Order No. **73700** (zincd)

Order No. **73700/sw** (black zincd)

TV Spigot



10 mm internal thread, 28 mm \varnothing

Order No. **08128**

Quick Trigger Clamp



max. load 100 kg

Order No. **01223/100 kg**



ACCESSORIES K 20

Wall Mount



for U-brackets, max. load 40 kg,
incl. screws

(M10 x 70 mm socket head screw,
M10 hex lock nut and flat washer)

for 15" speakers

Order No. **08130/F400/w** (RAL 9010)

Order No. **08130/F400**

Wall Mount



for U-brackets, max. load 40 kg,
incl. (M10 x 70 mm socket head screw,
M10 hex lock nut and flat washer)

for 8"-12" speakers

Order No. **08130/F/269/w** (RAL 9010)

Order No. **08130/F/269**

Speaker Stand



K&M, incl. wind up,
height 138,5 to 218 cm,
max. load 50 kg

Order No. **03011**

Rain Cover

for K 20

Order No. **01253/RC**



Cover

for K 20, padded

Order No. **01253**



Flight Case

for 2 pcs. K 20 and accessories,
heavy duty, 9 mm birch multiplex,
PVC coated, 6 x recessed sprung
handles, 4 x butterfly catches,
4 x 100 mm blue wheels, 2 pcs. with
brake, inserts for accessories, interior
lined with felt.

Order No. **16031**

